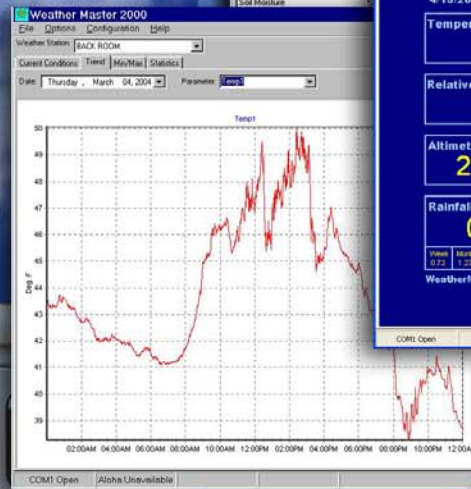
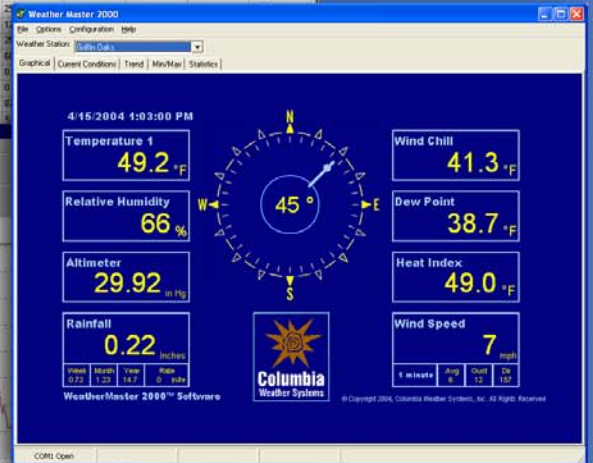
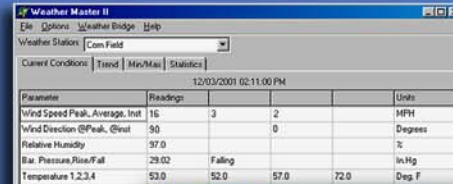


Capricorn 2000™

Vehicle Mount Weather System



www.columbiaweather.com
1 888-508-7375



Capricorn 2000™ Vehicle Mount Weather Station

Sensor Specifications

Temperature: Digital semiconductor type

Accuracy: $\pm 0.9^\circ\text{F}$ from -67° to 257°F

Resolution: 0.01°F

Barometric Pressure: Silicon shear stress strain gauge; temperature compensated and calibrated

Accuracy: ± 0.03 in. Hg over range

Range: 27.00 to 33.96 in. Hg

Resolution: 0.01 in. Hg

Wind Speed: infrared optical

Wind Speed Accuracy: $\pm 5\%$ or better from 20 to 125 mph, ± 1 mph from 5 to 20 mph

Resolution: 1 mph

Starting Threshold: 0.5 mph

Wind Direction: infrared optical

Wind Speed Range: 0 to 125 mph; 200 km/h; 108 knots (higher gusts may be recorded)

Wind Direction Resolution: 16 compass points

Relative Humidity: Capacitance

Accuracy: $\pm 3\%$ (or better) from 10 to 90% RH

Temperature Effect: less than $<\pm 1.5\%$ RH

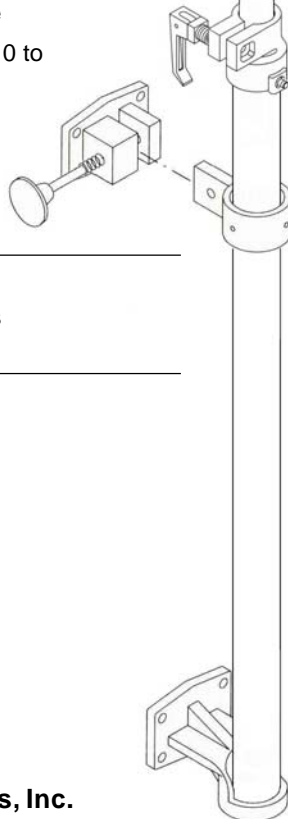
Stability: $\pm 2\%$ RH over 2 years

Reporting Resolution: 1% RH

Rainfall: Tipping bucket

Accuracy: $\pm 1\%$ at 2 in./hr or less

Resolution: 0.01 inch



Columbia Weather Systems, Inc. introduces a Vehicle-Mount option for Capricorn 2000™ Weather Stations, specifically designed for Emergency Management Personnel to quickly and easily attach the mast and sensors to any Emergency Response Vehicle.

This 8-ft telescoping sensor mast is made of rugged anodized aluminum, with heavy-duty powdered-coated steel mounting brackets which are permanently installed on the vehicle. The telescoping mast and affixed sensors are detachable for easy storage when not in use.

The built-in North Orientation Offset feature quickly and efficiently orients wind direction readings to North.

WeatherMaster 2000™ software interfaces with Cameo/Aloha software to automatically ingest weather data for HazMat applications.

With the Vehicle-Mount option and the 19" rack mount Weather Display console, the Capricorn becomes the ideal weather station for mobile vehicle operations.

Weather Parameters Monitored

- Temperature (up to four sensors)
- Barometric pressure, standard sensor
- Wind direction
- Wind speed with gust and average wind
- Relative humidity
- Heat index
- Wind chill
- Daily max/min
- Rainfall (optional)

Standard System Includes:

- Control module/data logger, wall mount power supply, and internal **barometric pressure** sensor
- One **temperature** probe with 50 ft. of cable
- **Relative Humidity** probe with 50 ft. of cable
- Self-Aspirating radiation shield for temperature and humidity sensors
- **Wind speed and direction** sensor with waterproof cable connector, mounting hardware (includes cross-arm support and u-bolt assembly) and 50 ft. of cable
- Vehicle Mount, **Telescoping Pole** (8 foot) and **Truck Mount Brackets**
- RS-232 computer cable, 6 feet

Ordering Information:

8150-E-1VM Standard system with Weather View 32 Software

8150-G-1VM Standard system with WeatherMaster 2000 Software and Cameo/Aloha interface

8150-F-1VM Standard system with Display console

8150-F-2VM Standard system with 19" Rack Display console

Optional Items

- Additional temperature sensors
- Rain gauge
- Display console
- Display console, 19" rack mount
- Weather View 32 Software
- WeatherMaster 2000 Software with Cameo/Aloha Interface



Columbia Weather Systems, Inc.

2240 NE Griffin Oaks, suite 100

Hillsboro, OR 97124

Toll-free 1 888 508-7375

Phone (503) 629-0887

Fax (503) 629-0898

2000vm@columbiaweather.com

www.columbiaweather.com

Revised 9-23-03